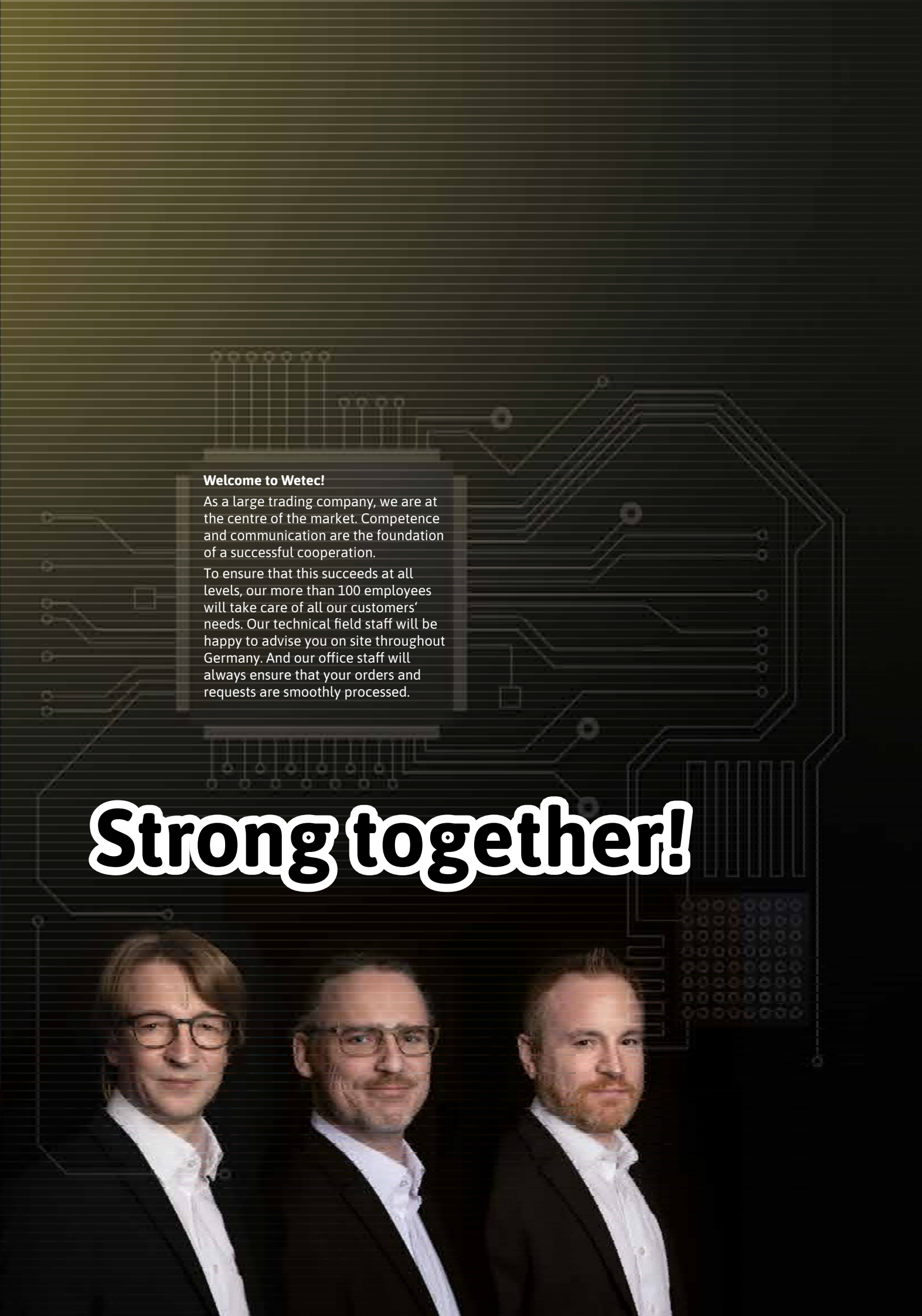




Strong!

What we do for you. And how we do it.



Welcome to Wetec!

As a large trading company, we are at the centre of the market. Competence and communication are the foundation of a successful cooperation.

To ensure that this succeeds at all levels, our more than 100 employees will take care of all our customers' needs. Our technical field staff will be happy to advise you on site throughout Germany. And our office staff will always ensure that your orders and requests are smoothly processed.

Strong together!





Strong. And that for over a hundred years.

Since 1903, we have been active with the company „Dönges“ in the tool and later also in the electronics sector.

In 1987, we took the growing importance of the electronics market into account by outsourcing this business area to the company Wetec.

Since then, Wetec has grown steadily and developed into a nationwide systems supplier for the electronics manufacturing industry. In the meantime, many European countries are also part of our distribution area.

1903

Founded as a rasp smithy by Johann Dönges

1949

Beginning of trading with quality tools

1987

Founding of the electronics division Wetec

1999

Move to larger business premises in the Walter-Freitag Street, Remscheid

2003

Relocation once again to larger business premises in the Jägerwald, Remscheid

2010

Addition and expansion of the storage area by a high-bay warehouse

2020

Relocation to the new logistics centre directly on the A1 highway with

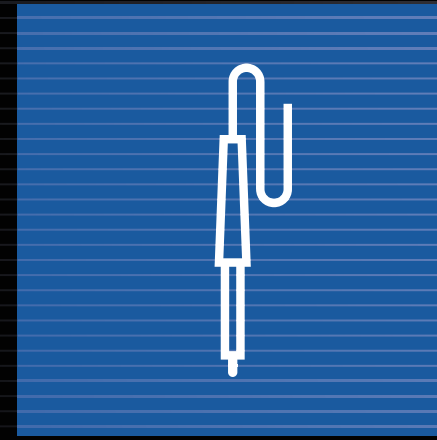
- over 17,000 m² of storage, production and office space
- High-bay warehouse with more than 11,000 pallet spaces
- Automated small parts warehouse with approx. 50,000 storage bins





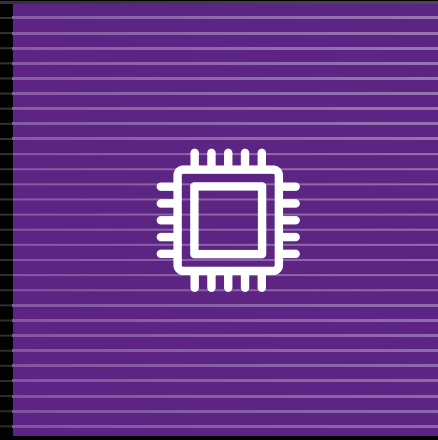
Strong. Our quality requirements.

Quality requirements in the electronics industry are constantly increasing. To enable our customers to meet this demand and development, we offer them products and solutions of the highest and most up-to-date quality. We succeed at this because we place particular emphasis on the further development of our own products and place high demands on our suppliers. Our employees are constantly trained so that they can competently advise our customers and supply them with the latest products. However, our know-how transfer also includes advising and training our customers with the help of recognised experts. We have been certified according to DIN EN ISO 9001 since 2008. And not least because of our high quality standards, many well-known companies have been among our customers for decades. In addition, our environmental management is certified according to DIN EN ISO 14001.



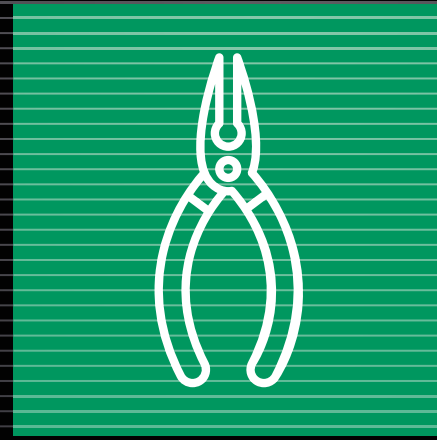
Soldering technology

- Soldering and desoldering equipment
- Repair stations
- Preheater
- Desoldering protectors
- Soldering and desoldering tips
- Manual desoldering accessories
- Tip Cleaning
- Fume extraction



Manufacturing / Inspection

- Dispensing solutions
- Compressors
- Stencil printers
- Reflow systems
- PCB holder
- Rotary plates and ball tables
- PCB magazines
- PCB separators
- Component tools for THT
- Labelfeeder
- Splicing tools
- Magnifier, luminaires, microscopes



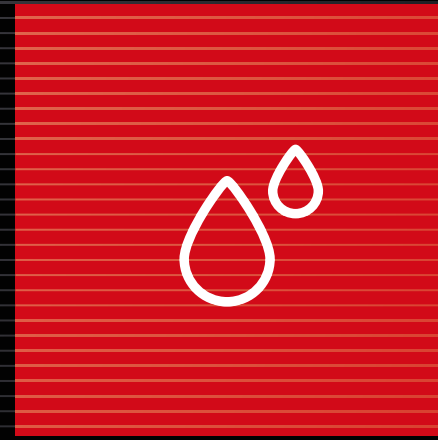
Tools for Electronics

- Pliers & side cutters
- Tweezers
- Pneumatic tools
- Auxiliary tools
- Knives
- Shears
- Screwdriver
- Torque tools
- Bits and bit holders
- Wrenches and -Sets
- Wire and crimping tools
- Service-Sets
- Toggle press
- Electric and cordless screwdriver



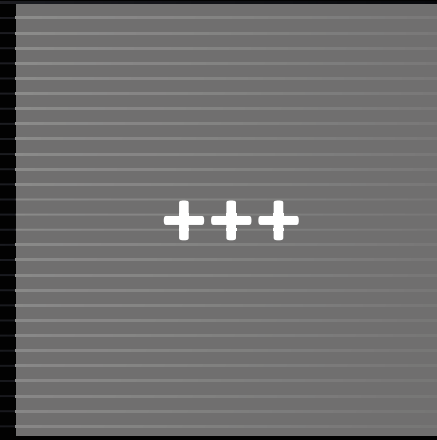
ESD

- Work and safety shoes
- Heel straps
- Overshoes and Dispenser
- Gloves and Finger cots
- ESD workwear
- Wrist straps
- Grounding equipment
- Measuring instruments
- Belt barriers
- Ionisation
- Packing material
- Warning labels and Tapes
- ESD foam
- Plastics and Foil
- Stock and Transport equipment
- Office equipment
- Cleaning and Service equipment
- Flooring systems
- Workstations and Workbenches
- Table mats
- Workchairs, stools and footrests



Solder / Chemicals

- Bars and solid wire
- Solder pastes
- Solder wires
- Fluxes
- Rework pins
- Technical sprays
- Adhesives, heat conductive pastes
- Cleaning agents
- Masking material



Further service range

- Cutting tools
- Abrasives
- Clamping tools
- Stone- and Woodworking tools
- Hand- and screwdriving tools
- Measuring equipment
- Repair- and production equipment
- Power tools
- Machines and accessories
- Work safety
- And many more...

Strong. Our digital solutions for your success.

On the way to Industry 4.0, electronic connectivity between market players is a mandatory necessity. Therefore, we offer our customers different digital solutions. This enables them to significantly simplify their business processes, shorten delivery times and considerably reduce procurement costs. You can choose from various options.

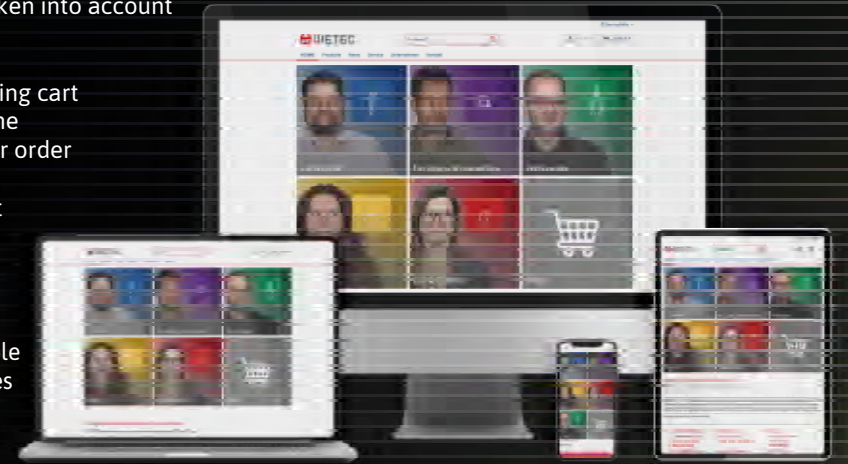
Personalised webshop

We will be happy to set up an account for you for our webshop www.wetec.de. Through the connection to our ERP system, we display all conditions and stock figures in real time. All the latest payment options are available there. Obviously, our shop fulfils all current security criterias and is secured via SSL.

- The most important advantages for you are:
- your special conditions are automatically taken into account
 - the stock and availability of our products
 - are visible at all times
 - you can save repeated order lists as a shopping cart
 - you can follow the entire order process online
 - current shipment details are stored with your order

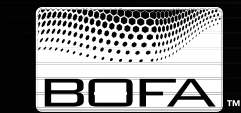
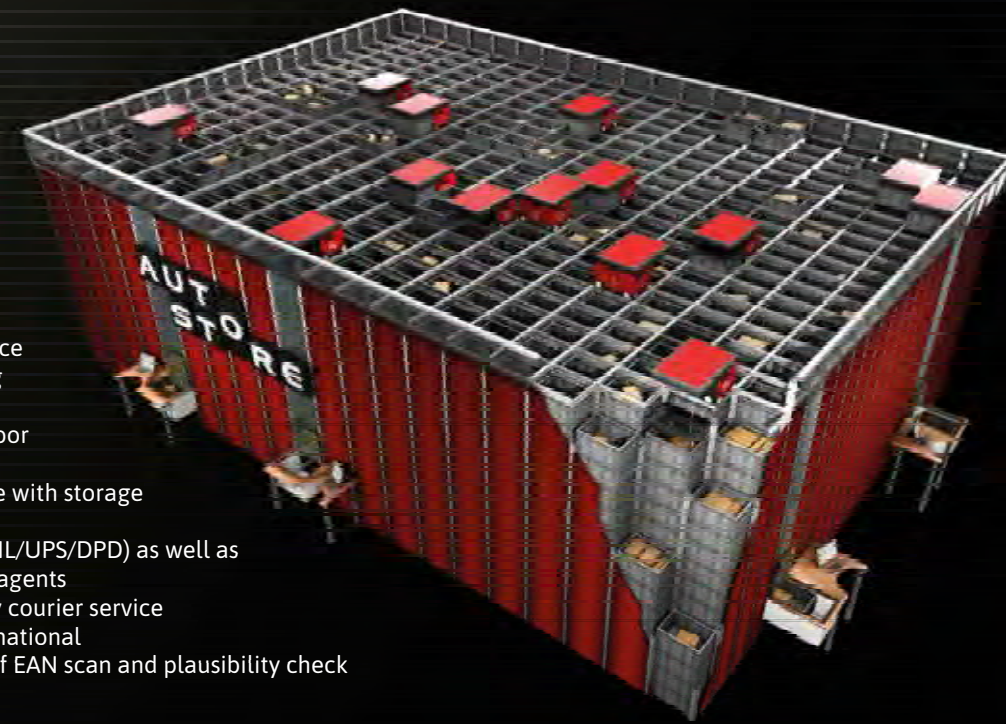
In addition, you will find in our shop all current information about our products, such as data sheets, certificates, operating instructions and videos.

Our catalogues, flyers and brochures are available in the download area. The news section provides you with the latest news about our company.



Strong. In order picking and shipping.

- approx. 130,000 articles available in 24h service
- paperless, route-optimised MDE order picking
- multi-order picking
- Shortest processing times thanks to special floor conveyors and fully automatic packing lines
- Autostore – automated small parts warehouse with storage robots and up to 50,000 containers
- Shipping with all common parcel services (DHL/UPS/DPD) as well as pallet shipping via three efficient forwarding agents
- Emergency deliveries throughout Germany by courier service
- Dangerous goods delivery, national and international
- Final inspection of each shipment by means of EAN scan and plausibility check



Strong. Our brands for a strong business development.



WE TECH YOU UP!

Wetec GmbH & Co. KG
Dönges-Straße 1
D-42929 Wermelskirchen
Fon +49(0)800 55 14 44 9
www.wetec.de